



MADE IN BRITAIN
DISTRIBUTED WORLDWIDE

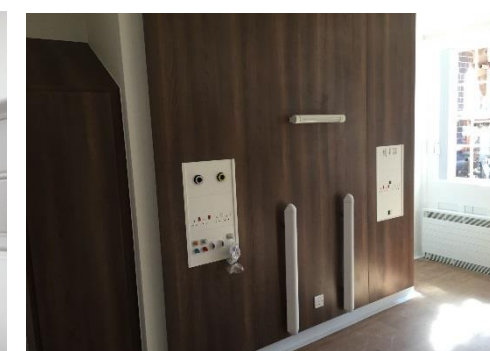
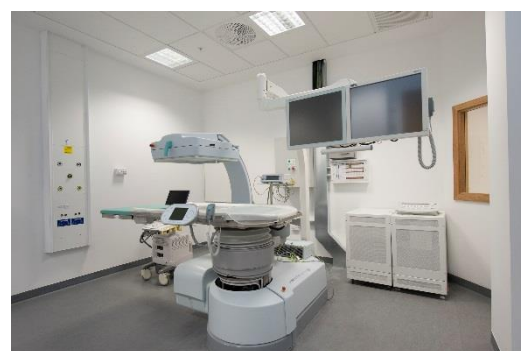
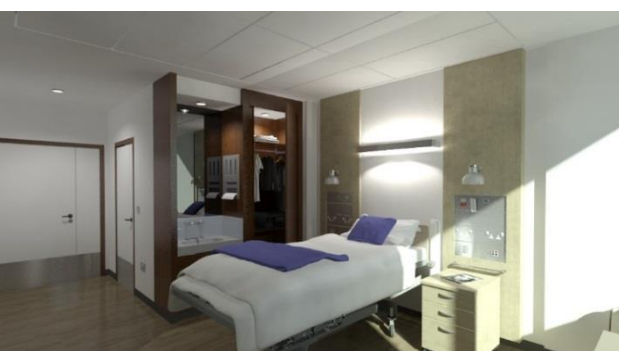
MEDICOLTM *vertical bedhead services containment*



CABL  FLOWTM
H E A L T H C A R E

applications

CABLEFLOW™





MADE IN BRITAIN
DISTRIBUTED WORLDWIDE



Innovation is at the heart of an evolutionary healthcare infrastructure. Challenging boundaries whilst being respectful of clinical skills are two valued philosophies which ensure knowledge led developments in bedroom architecture.

At CABLEFLOW we recognise the need to be different, to ensure product development offers practical and sustainable progression whilst always ensuring full compliance with Patient Safety Standards and improving the clinical environment.

We are proud of our British healthcare heritage which offers universal application around the world. Having been conferred a prestigious Queens Award for Innovation our client's take confidence in that unique recognition as a market leader.

As Britain's leading medical supply unit manufacturer our range of solutions meet a vast array of design concepts throughout all clinical environments whether primary or tertiary care areas, and every speciality in-between.

In 2005 our **integra** product range became the first and only bedhead trunking system to achieve Royal recognition with the conferment of a **Queens Award for Enterprise: Innovation** from Her Majesty Queen Elizabeth II.

Improving the clinical architecture, the patient experience and ensuring flexibility and adaptation in later use are hallmarks of our innovative integrated lighting solutions. At home in an acute hospital setting or more domestic environments such as Hospice's and the like our systems can be tailored to your requirements.





SYSTEM OVERVIEW

The **MEDICOL** vertical Patient Care Services Column has evolved from a market requirement for a stylish yet adaptable vertical trunking system. The concepts and desires of architects, consulting engineers and contractors have been taken into account in the development of this product as have the peculiarities of installation and maintenance in healthcare buildings.

HTM 08-03 permits the use of vertical containment "Where the building structure does not permit the use of a horizontal bedhead unit". The **MEDICOL** offers a vertical solution that is simply fed from the false ceiling. In a similar manner to our horizontal trunking systems, it accommodates all patient care services for mains power, nurse call, entertainment, medical gases and lighting, by providing up to five individually screened compartments for the respective services. **MEDICOL** can be fully customised and is available in a range of more than 360 standard colours, each accompanied by a 25 year Applicators Guarantee.

STANDARDISATION

MEDICOL, can be customised and manufactured to meet specific requirements and will suit numerous applications in both new and existing healthcare buildings.

The standard overall size of 1928mm high x 502mm wide x 104mm deep reflects our desire to ensure it remains unobtrusive when installed, whilst offering the capacity to meet the needs of one or two bed positions. Where an extended comprehensive range of services is required a **BROAD MEDICOL** with a width of 742mm is available.

CO-ORDINATED DÉCOR

The use of colours and finishes are encouraged on this system to enhance the overall room appeal and make a feature of the product, thus creating a focal point. All surfaces of the **MEDICOL** are smooth and easy to clean, with no fixing screws evident on any visible facias and ensures a high quality appearance, whilst being fully HTM 08-03 compliant. We have selected a mix of hard wearing components which will withstand the daily rigours of a modern hospital whilst maintaining a fashionable appearance throughout the course of time.

SERVICES PROVISION

Each set of services outlets are mounted on accessory plates measuring 200-400mm high x 368mm wide (608mm on **BROAD MEDICOL**) supplied powder coated either to match the side pods or in a contrasting colour. Alternatively the side pods are available with an anodised aluminium finish in AA25.



MAINS POWER

Electrical sockets from the UK, continental Europe, the US and other geographical regions can be accommodated, including switched or unswitched socket outlets for standard or non-standard configurations. These can be colour co-ordinated subject to the respective manufacturer's product range.

The design of **MEDICOL** ensures that no screw fixings are visible on the trunking plate and this applies to all flush mounted outlets, complying fully with the requirements of HTM 08-03.

MEDICAL GAS TERMINAL OUTLETS

MEDICOL is designed to accommodate all types of medical gas terminal outlets, located onto a terminal (type) specific mounting grid which allows vertical and horizontal adjustment for precise alignment. Gas pipework is fully segregated from cabled services, ventilated, accessible and allowing maintenance with total safety as required by HTM 02-01.

The quantity of gas specific outlets varies depending on the exact product configuration selected with any variation of outlets from a comprehensive range as defined in HTM 02-01.



NURSE CALL SYSTEMS

Each hospital will vary in its individual requirement from the next, none more so than the nurse call system. **MEDICOL** has been designed specifically to accommodate all commercially available nurse call products.

As an independent trunking manufacturer with no allegiance to any specific nurse call supplier, we leave the choice of nurse call manufacturer up to you, the user and specifier. We ensure compatibility between the two manufacturers, whilst ensuring that the product quality and performance is maintained. Often, when a client states a particular preference for bedhead services, this invariably refers to the nurse call system to ensure compatibility with existing arrangements.

LIGHTING

MEDICOL has been designed to provide bedhead reading/observation or examination lighting via one or more 'anglepoise'-type lamps, which are fitted to the front of the column, by a specific bedlight bracket. We can supply these lamps from a variety of manufacturers or alternatively they can be third-party supplied and easily site-fitted by the installing contractor.

Where a complete ward lighting solution is required, the **MEDICOL** can be integrated with our **WAVE** up and downlight healthcare luminaire.

Where appropriate, accessory plates are labelled with the respective legends and/or text to ensure the user can clearly identify the function of the equipment, all generally in accordance with HTM 08-03.

Plates are secured into place with a number of concealed screws, all hidden from view by a bespoke light grey or white polymer infill strip, thus complying with the requirements of HTM 08-03 which also ensures easy maintenance of the system.





DATA, PATIENT MONITORING & TV SERVICES

TV, data, fibre optic and voice services are easily accommodated within the **MEDICOL** system. Proprietary supplied outlets are surface mounted or flush fitting for a co-ordinated appearance.

CONCEALED PLATE FIXINGS

In keeping with the screw free fascia, **MEDICOL** uses a bespoke lid retention slug along the side pods that neatly slides into a channel created by the base-lid assembly preventing it from being opened inadvertently.

A bespoke polycarbonate cover strip neatly integrates with the base extrusions to ensure that all cover plate securing screws are neatly concealed and complies with HTM 08-03. This strip is easily removed with a specific tool thus ensuring that no damage is caused to the powder coated finish. The cover strip is available in white or grey and contributes towards the superb aesthetics of this **CABLEFLOW** medical trunking system..

ADJUSTABLE ARM LIGHTING

MEDISYS has been designed to provide bedhead reading/observation or examination lighting via one or more 'adjustable arm' type lamps, attached to the front of the trunking by a bespoke bed light bracket. We can supply these lamps from a variety of manufacturers or alternatively they can easily be site-fitted by the installing contractor.

LEGENDS AND LABELLING

The specific nature of individual accessory lids in hospital applications, requires that legends and usage instructions are clearly evident to the user. We adopt a policy of indelibly marking all text and legends on our systems thus ensuring a greater life expectancy for the component and making it easy for the user to identify the relevant service.

OFF SITE PRE-FABRICATION

MEDICOL offers the efficiencies of factory assembled pre-wired, pre-piped modules with all outlets pre-configured, aids the simplicity of the product. Prefabricated modules can be fitted as a second or third fix item and later in the conventional construction programme.

INSTALLATION

MEDICOL does not use proprietary first fix mounting plates and therefore can be installed by any competent tradesman. However, we have recognised the desire of some clients to procure a total supply and installation package from a specialist manufacturer and our experienced Contracts Department specialises in the installation of our trunking systems.

All **CABLEFLOW** installation technicians are trained to the highest standards, and equipped with the most up to date machinery to achieve the best possible result when our products and their skills are combined.





WASTE GASES EXTRACT

The requirements for waste gases and toxic plume extraction is now embedded within HTM 02-01, whilst also forming a consideration under Health & Safety at Work legislation within workplace environments.

MEDICOL can be extended to allow the incorporation of a fully insulated and self contained extract duct. Incorporating a low level grille of appropriate size the overall extract element is sized to suit the specific scheme.

PATIENT POWER INTEGRATION

Equipment and control units provided as part of a 'Patient Power' initiative for bedside TV and interactivity e.g HTS/Hospedia etc can be attached to the front of the **MEDICOL** to facilitate a co-ordinated solution to entertainment provision. The actual arrangement will depend upon the Patient Power provider selected.

VITAL SIGNS MONITORS

Similarly, support for vital signs monitors and other medical electrical equipment at each bed space can be provided using a universally recognised monitor mount channel or stainless steel IV posts.

RENAL SERVICES

For the integration of renal systems please refer to our **RO system** brochures or contact our sales office for more details





POTENTIAL EQUALISATION

The **CABLEFLOW POAG-PES** potential equalisation socket (equipotential earth bonding) is installed on all bedheads to meet the requirement of BS7671 Section 710 and in an appropriate number.

SPECIFYING PEACE OF MIND

Specifying a **CABLEFLOW** medical trunking system throughout your hospital will provide an easy to use and aesthetically pleasing solution while maintaining a uniform look across all departments.



As an Award winning manufacturer, innovation is at the core of our philosophy and product solutions, based upon a proven track record over 25+ years in the UK healthcare industry.

EMC CERTIFICATION AND COMPLIANCE

Protecting electronic components in the patient environment from Electro-Magnetic Interference (EMI) and Radio Frequency Interference (RFI) is of paramount importance. **MEDICOL** has been designed specifically to control both the emission and reception of all such Interference with the EMC elements of ISO 11197 complied with and independently tested by BSI using all commercially available nurse call systems in operation.





Standard MEDICOL	Broad MEDICOL
 <p>502mm</p> <p>104mm</p>	 <p>742mm</p> <p>104mm</p>

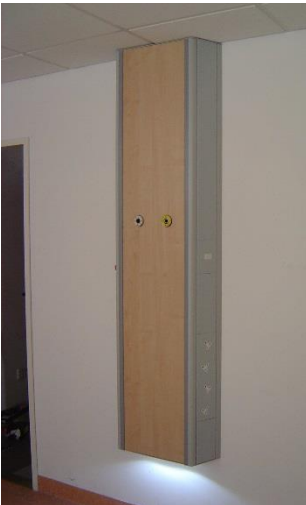
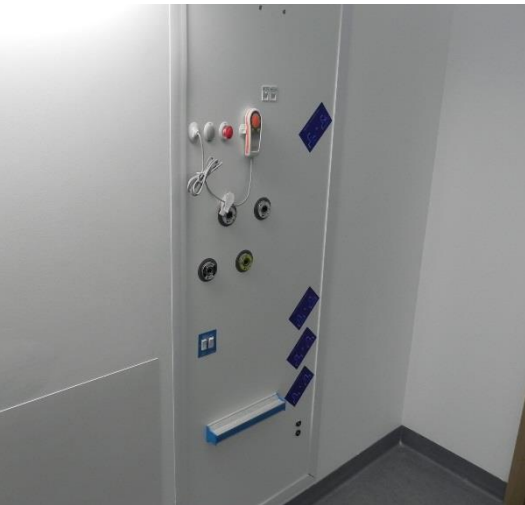
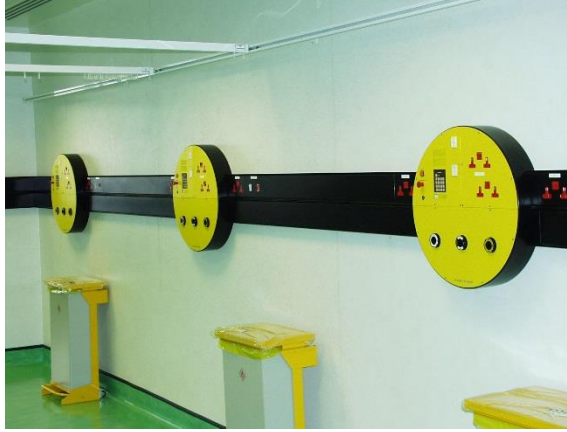
Standards compliance

Document Reference	Document Description
BS 476-10: 2009	Fire tests on building materials and structures. Guide to the principles, selection, role and application of fire testing and their outputs
BS 1363-1: 1995	13 A plugs, socket-outlets, adaptors and connection units. Specification for rewirable and non-rewirable 13 A fused plugs
BS 1363-2: 1995	13 A plugs, socket-outlets, adaptors and connection units. Specification for 13 A switched and unswitched socket-outlets
BS 1363- 4: 1995	13 A plugs, socket-outlets, adaptors and connection units. Specification for 13 A fused connection units switched and unswitched
BS EN 60669-1:1999+A2:2008	Switches for household and similar fixed-electrical installations. General requirements
BS EN 60598-1:2015	Luminaires. General requirements and tests
BS 5266-1:2011	Emergency lighting. Code of practice for the emergency escape lighting of premises
BS 5733:2010+A1:2014	General requirements for electrical accessories. Specification
BS EN 12206-1:2004	Paints and varnishes. Coating of aluminium and aluminium alloys for architectural purposes. Coatings prepared from coating powder
BS 6701: 2010	Telecommunications equipment and telecommunications cabling. Specification for installation, operation and maintenance
BS 6972: 1988	Specification for general requirements for luminaire supporting couplers for domestic, light industrial and commercial use
BS 7671:2008+A3:2015	Requirements for Electrical Installations. IET Wiring Regulations
BS 8300:2009+A1:2010	Design of buildings and their approaches to meet the needs of disabled people. Code of practice
BS EN ISO 9170-1:2008	Terminal units for medical gas pipeline systems. Terminal units for use with compressed medical gases and vacuum (formally BS EN ISO 9170-1)
BS EN ISO 9170-2:2008	Terminal units for medical gas pipeline systems. Terminal units for anaesthetic gas scavenging systems (formally BS EN 737 -4)
BS EN ISO 7599:2010	Anodizing of aluminium and its alloys. General specifications for anodic oxidation coatings on aluminium (formally BS EN 12373:2001)
BS EN 12464-1: 2002	Light and lighting. Lighting of work places. Indoor work places
BS EN 13032-2: 2004	Light and lighting. Measurement and presentation of photometric data of lamps and luminaires. Presentation of data for indoor and outdoor work places
BS EN 61000-6-3:2007+A1:2011	Electromagnetic compatibility (EMC). Generic standards. Emission standard for residential, commercial and light-industrial environments (formally BS EN 50081-1)
BS EN 61000-6-4:2007+A1:2011	Electromagnetic compatibility (EMC). Generic standards. Emission standard for industrial environments (formally BS EN 50081-2)
BS EN 61000-6-1:2007	Electromagnetic compatibility (EMC). Generic standards. Immunity for residential, commercial and light-industrial environments (formally BS EN 50082-1)
BS EN 50083-2:2012	Cable networks for television signals, sound signals and interactive services. Electromagnetic compatibility for equipment
BS EN 50085-1:2005+A1:2013	Cable trunking systems and cable ducting systems for electrical installations. General requirements
BS EN 50085-2: 2006	Cable trunking systems and cable ducting systems for electrical installations. Cable trunking systems and cable ducting systems intended for mounting on walls and ceilings

Document Reference	Document Description
BS EN 60439-5: 2006	Low-voltage switchgear and controlgear assemblies. Particular requirements for assemblies for power distribution in public networks
BS EN 60529:1992+A2:2013	Degrees of protection provided by enclosures (IP code)
BS EN 60598-2-22:1998+A2:2008	Luminaires. Particular requirements. Luminaires for emergency lighting
BS EN 60601-1-6:2010+A1:2015	Medical electrical equipment. General requirements for basic safety and essential performance. Collateral standard. Usability
BS EN 60601-1-2: 2007	Medical electrical equipment. General requirements for basic safety and essential performance. Collateral standard. Electromagnetic compatibility. Requirements and tests
BS EN ISO 11197:2009	Medical supply units
BS EN ISO 7396-1:2007+A3:2013	Medical gas pipeline systems. Pipeline systems for compressed medical gases and vacuum
ISO 19054	Rail Systems for supporting medical equipment
ISO 7396-2: 2007	Medical gas pipeline systems. Anaesthetic gas scavenging disposal systems
HBN 00-03	Designing generic clinical and clinical support spaces
HBN 00-04	Circulation and communication Spaces
HBN 00-09	Infection control in the built environment
HBN 04-01	Adult in-patient facilities: planning and design
HBN 04-02	Critical care units
HBN 4, Supplement 1	Isolation facilities for infectious patients in acute settings
HBN 6	Facilities for Diagnostic imaging and interventional radiology:
HBN 07-01	Satellite Dialysis Unit
HBN 07-02	Main Renal Unit
HBN 09-02	Maternity Care Facilities
HBN 09-03	Neonatal Units
HBN 57: 2003	Facilities for critical care
HTM 02-01	Medical gas pipeline systems
HTM 06-01	Electrical services: supply and distribution
HTM 06-02	Electrical safety guidance for low voltage systems
HTM 08-03	Management of bedhead services in the health sector
HTM 17	Health Building Engineering Installations
HTM 2014	Abatement of electrical interference
HTM 2020	Electrical safety code for low voltage systems
CIBSE LG 2: 2008	Lighting guide - Hospitals and health care buildings
CIBSE LG 3: 2001	Lighting guide - The visual environment for Display Screen Use
CIE	European Lighting Guide
IEC 60364-7-710: 2002	Electrical installations of buildings. Requirements for special installations or medical locations (UK BS7671 Section 7-710)
NHS SPEC C49: 1997	Nurse Call Systems. Revision 3
93/42/EEC	Medical Devices Directive









MADE IN BRITAIN
DISTRIBUTED WORLDWIDE

CABLE  **FLOW**™

Cableflow
International
Limited

For full product data sheets go to our website or contact us directly

www.cableflow.com

Cableflow International Limited
Windsor House | Abbey Barn Road
High Wycombe | Buckinghamshire
HP11 1NN | United Kingdom

(tel) 00 44 (0) 1494 52 88 11
(fax) 00 44 (0) 1494 52 11 88
(email) sales@cableflow.com

Registered in England 2356618

Copyright 2016 v1

