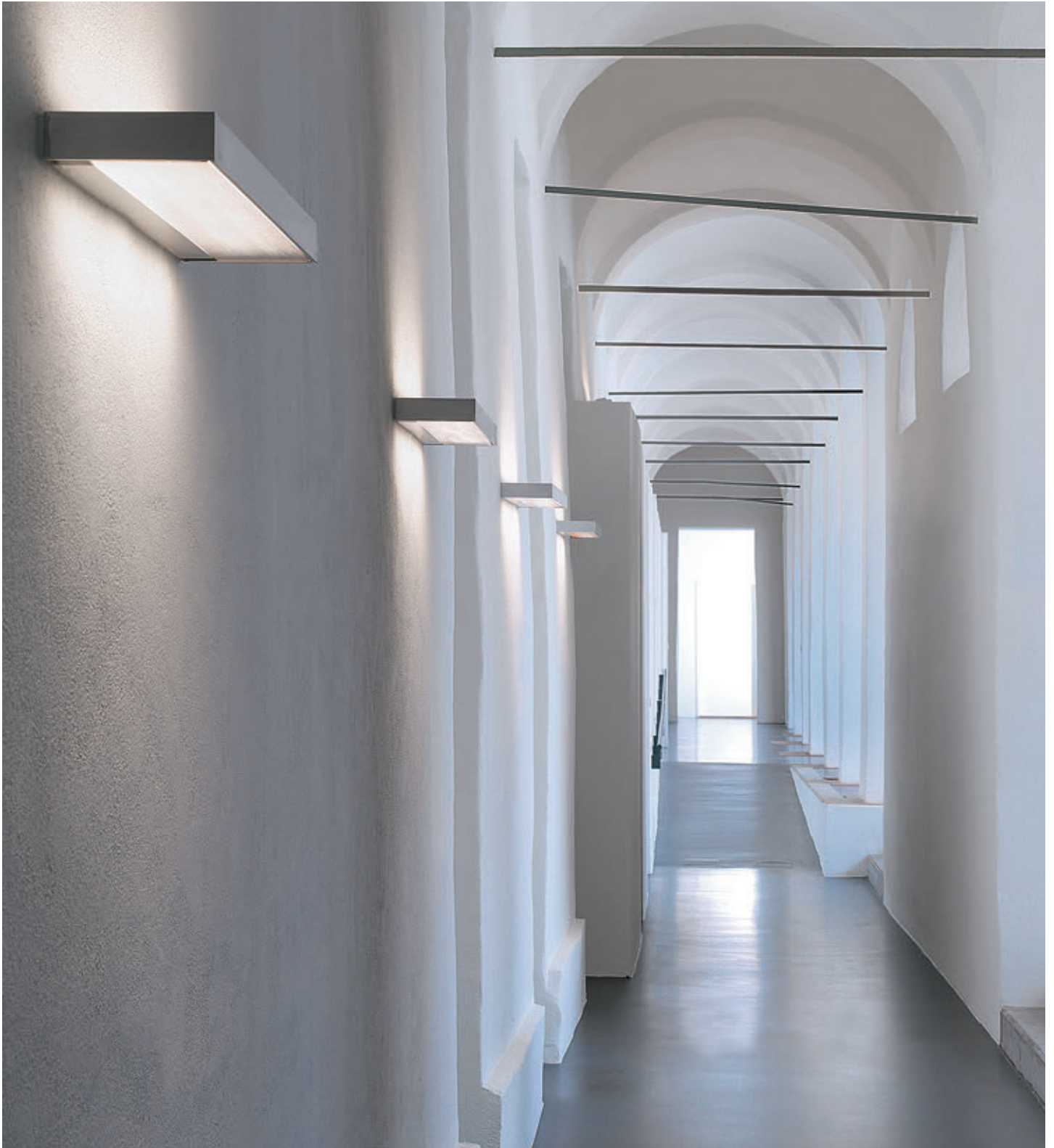


D^{lite}® **vanera**
ELEGANCE IN LIGHT



LIGHT FOR PEOPLE FOR HEALTH AND WELL-BEING

To us light is not just light. We also focus on people and the rooms in which they move. With more than 70 years of experience and the use of state-of-the-art technology we develop and manufacture the best possible light. And we promise quality made in Switzerland.

Derungs 

CONTENT

LIGHTING SOLUTIONS WITH D^{lite}® vanera

| | PAGE | | |
|---------------------------|------|-----------------------------|--|
| ABOUT THE vanera | 4 | THE vanera ROOM LIGHT | A straight forward design |
| | 6 | D ^{lite} ® vanera | Versatile to suit your needs |
| | 8 | QUALITY LIGHT | Made and engineered in Switzerland |
| | 10 | WALL AND CEILING VERSION | Comfortable light distribution |
| vanera APPLICATIONS | 12 | GENERAL LIGHTING | Light in the office |
| | 14 | PATIENT AND RESIDENTS ROOMS | Feel at home |
| | 16 | BATHROOM | For a sunny start of the day |
| | 18 | CORRIDOR | Public zones |
| | 20 | STAIRCASES | Reducing risks |
| vanera INNOVATIONS | 22 | vanera ONE | Small but mighty |
| | 24 | vanera ORBIT | well-rounded |
| | 26 | DESIGNS AND COLORS | For your unique style |
| VTL (VISUAL TIMING LIGHT) | 28 | VTL (VISUAL TIMING LIGHT) | Lighting for our senses Lighting for health |
| TECHNICAL DATA | 30 | TECHNICAL DATA | Technical data |
| ORDER NUMBERS | 32 | ORDER NUMBERS | Order numbers |
| SAVING ENERGY | 35 | EFFICIENT LIGHT | Comparing data |

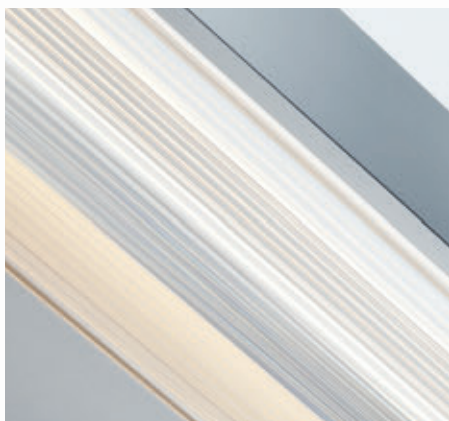
THE vanera ROOM LIGHT

A STRAIGHT FORWARD DESIGN

Subtle design, high quality materials as well as intelligent lighting technology and energy efficiency are affiliated in one lighting group. These are the components that make up modern classics. Supreme and straight forward, vanera harmonizes with any style and fits perfectly into its surroundings. And what the viewer still sees before the design is critical: best lighting!

- **Light distribution:**
General lighting (indirect/direct),
glare-free reading light (direct)
- **Light source:**
T5 fluorescent lamp, LED night light
- **High quality materials:**
Natural aluminum anodized
high quality and long lasting
- **Specially designed prismatic lens:**
provide an optimized asymmetric light
distribution and guarantee a uniform illumination
of the room and a pleasant, glare, reflection and
shadow-free light
- **Individual design:**
Materials, design, functionality,
engineering, application range
- **Additional features by request:**
Emergency lighting with 3 hours of battery
operation, toolbox socket for line current,
Derungs light management (DLM)
- **Meets current standards:**
EN 60598-1, EN 60598-2-1, EN 60598-2-25





D^{lite}® vanera

VERSATILITY TO SUIT YOUR NEEDS

D^{lite}® **vanera**, that is the epitome of a complete luminaire group. In addition to the clear cubic shapes, the circular vanera Orbit and single element vanera One are now included in the group. Vanera thereby sets new standards regarding individuality and quality. The group affiliation is evident at first glance: high quality materials, timeless design and flowing material transitions.



Base and VTL - Visual Timing Light

- 2 fluorescent lamps T5 39W / 54W (VTL with various color temperatures)
- Daylight tracking
- Electronic ballast DALI (Derungs light management)
- Aluminum panel on side/front
- Suitable for walls and ceilings



One

- 1 Fluorescent lamp T5 24W / 39W / 54W
- General lighting, direct/indirect
- Especially suitable for narrow hallways and low ceilings up to 2.3 m
- Electronic ballast (Optional with DALI)
- Suitable for walls and ceilings



Bed

- 2 Fluorescent lamps T5 39W / 54W
- General lighting, indirect
- Examination light, direct/indirect
- Reading light, direct
- Night-light, LED
- Electronic ballast (Optional with DALI)
- Suitable for walls



Bath

- 2 Fluorescent lamps T5 24W
- General lighting, direct/indirect
- Protection type IP44
- Electronic ballast
- Suitable for walls



Spot

- 2 Fluorescent lamps 24W / 39W / 54W
- General lighting, indirect
- Halogen spotlight (50W) as accent lighting
- Electronic ballast (Optional with DALI)
- Suitable for walls and ceilings



Orbit

- 1 or 2 fluorescent lamp(s) T5 R 22W, 55W or 55/60W
- General direct lighting, indirect distribution for ceiling and wall illumination
- Electronic ballast (Optional with DALI)
- Suitable for walls and ceilings



QUALITY LIGHT

MADE AND ENGINEERED IN SWITZERLAND

Behind its superior design the vanera is a fine piece of highest engineering. The light is dispersed in various directions through a specially developed prismatic lens. So the room is illuminated in a soft and homogeneous way yet the light remains glare and shadow-free. But the vanera also convinces in everyday life: Just one single person is necessary to mount and install the the complete luminaire or to change a lamp. And thanks to its closed design even the cleaning is easy.



CORRIDOR-WALL

- Special wide-spread and glare-free technology
- General lighting direct / indirect, with slightly asymmetric light dispersion
- Low in reflectance with good glare reduction
- Homogeneous room lighting



CORRIDOR-CEILING

- Special wide-spread and glare-free technology also for wider corridors
- General lighting direct / indirect
- Low in reflectance with good glare reduction
- Homogeneous room lighting



BED

- Special asymmetric light dispersion
- General lighting indirect
- Examination light indirect / direct
- Reading light direct



NIGHT LIGHT

- LED night light for better orientation
- No disturbing effects by indirect light
- Improved safety in the dark
- Identification of contours



WALL AND CEILING VERSION COMFORTABLE LIGHT DISTRIBUTION

The application fields are as diverse as life itself: Whether on the wall or ceiling. The vanera is always the right solution. The various design and equipment options adjust to any requirement. Whether it is an elegant aluminum housing or a dull opal acrylic glass. The version with the especially developed daylight tracking light (VTL) is also excellent: It activates in the morning, vitalizes in the afternoon and chill out in the evening. And it's all conveniently controlled via the Derungs light management.





GENERAL LIGHTING LIGHT IN THE OFFICE

People are the most important resources in the company. But poor lighting leads to headaches, fatigue and eyestrain. Well-illuminated offices have a positive impact on the health and motivation of the employees. Investments in the right lighting pay out in the medium and long term by decreasing labor costs and increasing the well-being of employees.





PATIENT AND RESIDENTS' ROOMS FEEL AT HOME

In addition to the medical care, the feel-good factor is important for the recovery process: Not only a comfortable furnished room contributes to the well-being. Good lighting is also crucial: it let's you move safely within the room, and facilitates individual activities, such as reading. And, of course, good basic lighting supports the care and examination by the staff.





BATHROOM

FOR A SUNNY START OF THE DAY

Who does not enjoy this: the sun shines through the bathroom window ... Unfortunately, this is not always the case, since bathrooms frequently do not have a window or are insufficiently illuminated. The vanera Bath creates "sun-like" lighting conditions: soft, homogeneous, and low in shade. The facial area here is illuminated without glare. Good lighting produces safety and can reduce the risk of falling. Of course, with splashing water protection by IP 44.





CORRIDOR

PUBLIC ZONES

A particular challenge is often the lighting in the hallway. There usually are no windows or only insufficient windows. In order to make the corridor inviting, good lighting is necessary: It makes the room to appear a wider and more open. At the same time, it prevents overtaking shadows or reflective light spots. The human need for light is supplemented by the additional features of Visual Timing Light.





STAIRCASES

REDUCING RISKS

Only a short moment, one wrong move and a fall is inevitable. Good lighting can prevent risks and uncertainties when climbing stairs. Occurring shadows can be reduced in transition zones. The light is optimally positioned from the ceiling and/or the walls by aiming it directly onto the floor. Homogeneous, high-performance lighting creates safety.





vanera ONE

SMALL BUT MIGHTY

Typical vanera! The vanera lights are known for excellent light output, optimum efficiency, quality workmanship and materials. But the size makes the difference: Additional application and design options open up by its slim dimensions. The single element vanera One fits inconspicuously into the room in low or narrow spaces.



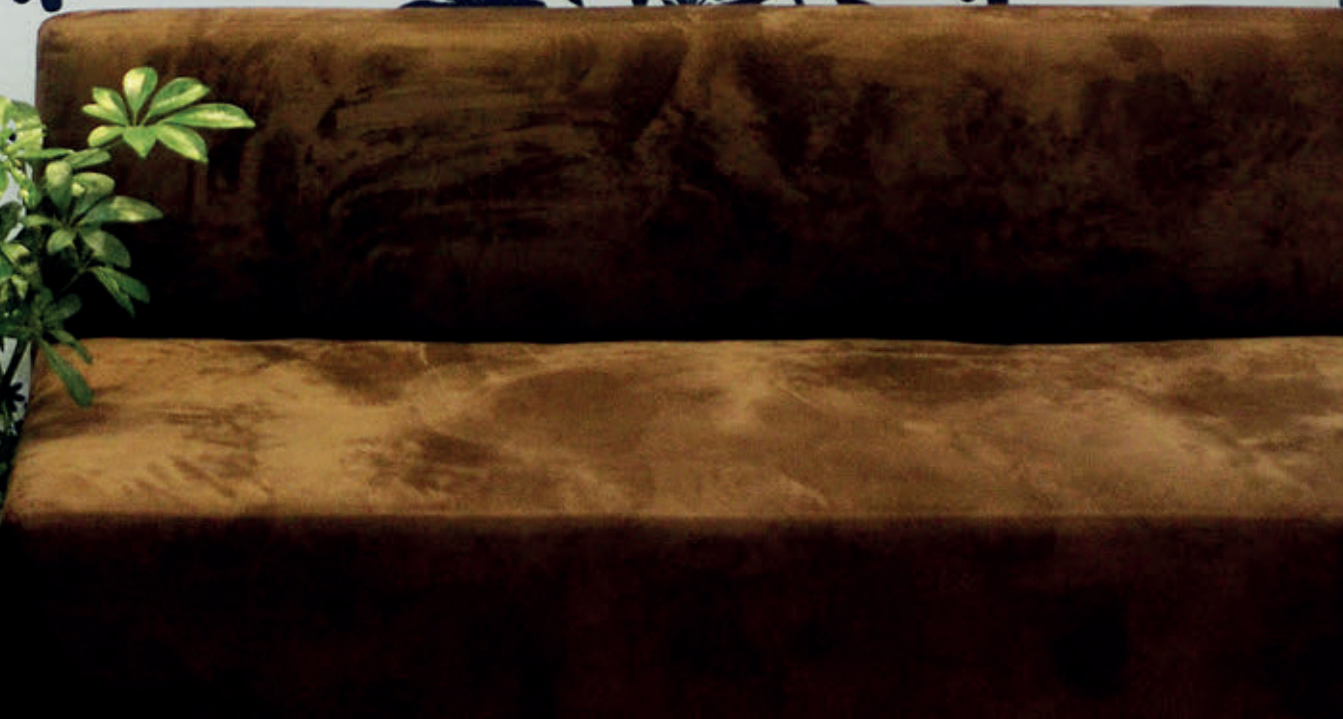


vanera ORBIT

WELL-ROUNDED

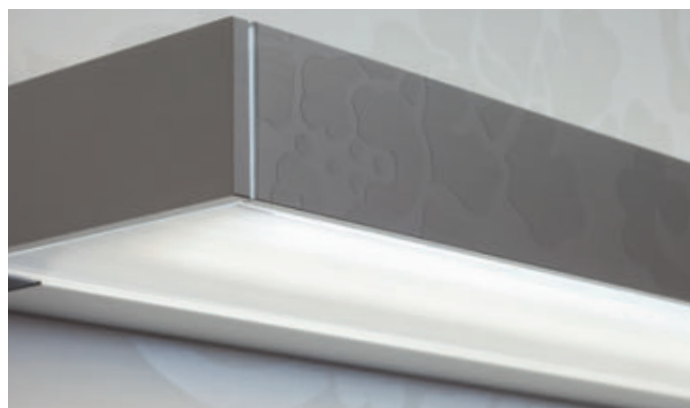
Those who opt for the new orbit vanera are not only in fashion, but also opt for a quality product of the vanera group. The resolute simple and quiet design lends the vanera Orbit it's own charm. The mat, high-quality finished housing of acrylic glass fits perfectly on the wall or ceiling. And T5 ring fluorescent lamps provide convincing lighting.



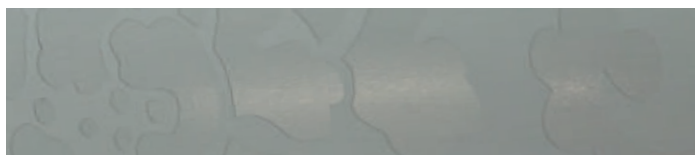


DESIGNS AND COLORS FOR YOUR UNIQUE STYLE

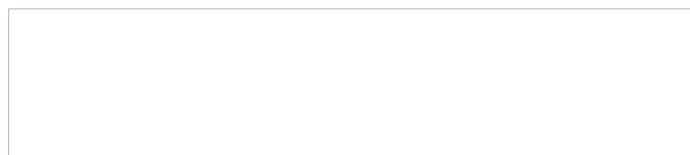
Every room has its own style and accessories can make all the difference. Vanera now offers decorative trims in many colors, patterns and wood designs, to complement any décor. These trims easily slide onto the outside edge of the fixture and completely change the look of the light. Match your walls, furniture or floors – be creative!



Decorative suggestions:



Color options:





VTL (VISUAL TIMING LIGHT)

LIGHT FOR OUR SENSES. LIGHT FOR HEALTH

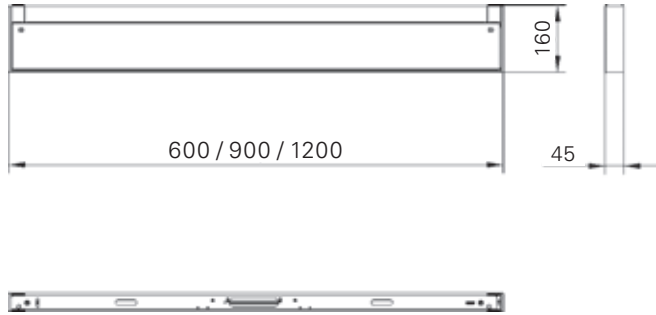
The difference between a bright, sunny day and a gray, dismal one affects the amount of light coming in through windows, skylights, etc. These changes can affect our senses subconsciously; our mood, attitude, productivity. The Visual Timing Light System is a valuable tool in modulating the amount of light inside depending on the light coming in from the outside throughout the day and night. This VTL is available as an option to several vanera models.



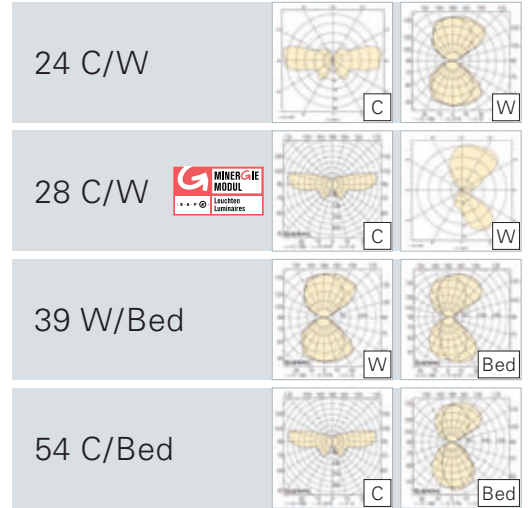
TECHNICAL DATA

vanera / vanera Bed

Technical Drawing



Light Distribution

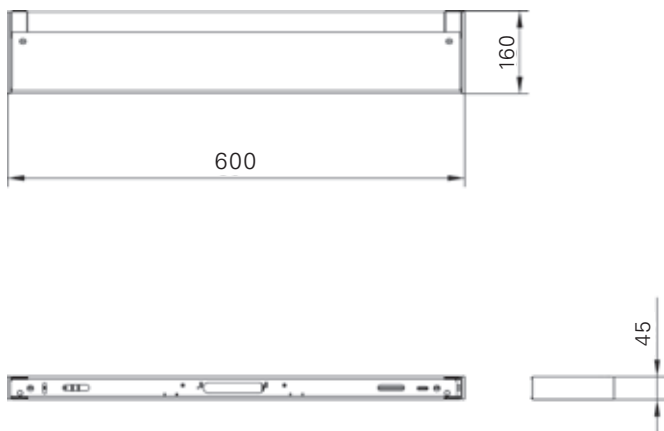


C = ceiling W = wall



vanera Bath

Technical Drawing



Light Distribution



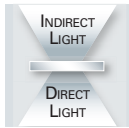
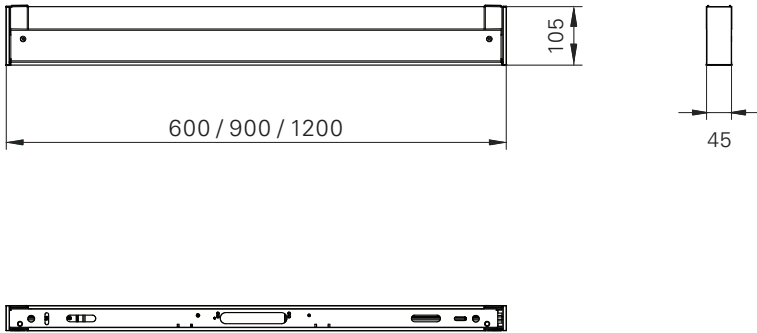
W = wall

24 WATT

TECHNICAL DATA

vanera One

Technical Drawing



Light Distribution

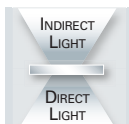
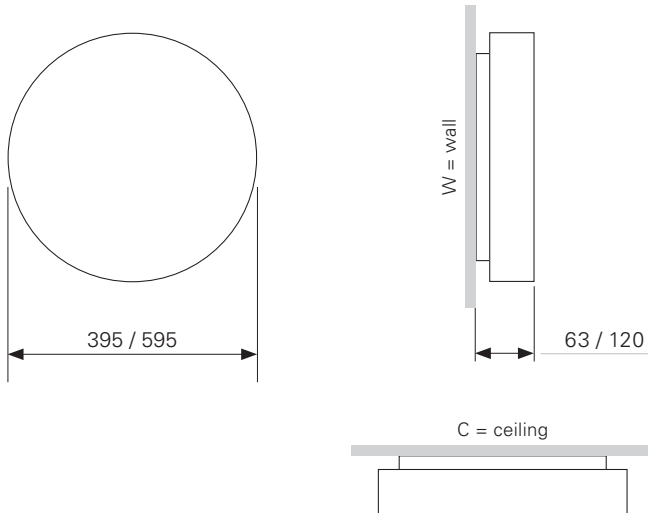


C = ceiling W = wall

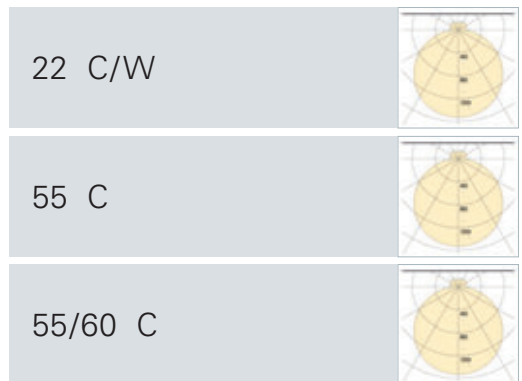


vanera Orbit

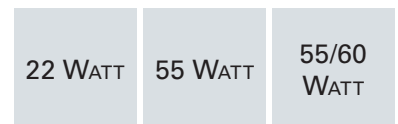
Technical Drawing



Light Distribution



C = ceiling W = wall



ORDER NUMBERS

Dlite® vanera VTL 54/54 C

D14.344.000 - Anodized aluminum

Dlite® vanera 2x54 C

Dlite® vanera 2x54 C, including DALI D14.343.000

Dlite® vanera 2x54 C D14.342.000

Dlite® vanera Eco 2x54 C D14.341.000

Dlite® vanera 2x28 C

Dlite® vanera 2x28 C D14.888.000

Dlite® vanera Eco 2x28 C D14.887.000

Dlite® vanera 2x24 C

Dlite® vanera 2x24 C D15.065.000

Dlite® vanera Eco 2x24 C D14.868.000

Dlite® vanera VTL 39/39 W

D14.477.000 - Anodized aluminum

Dlite® vanera 2x39 W

Dlite® vanera 2x39 W, including DALI D14.332.000

Dlite® vanera 2x39 W D14.331.000

Dlite® vanera Eco 2x39 W D14.330.000

Dlite® vanera 2x28 W

Dlite® vanera 2x28 W D15.018.000

Dlite® vanera Eco 2x28 W D15.066.000

Dlite® vanera 2x24 W

Dlite® vanera 2x24 W D14.564.000

Dlite® vanera Eco 2x24 W D14.640.000

ORDER NUMBERS

Dlite® vanera Bed 54/54 W

| | |
|--|-------------|
| Dlite® vanera Bed 54/54 W, including DALI | D14.338.000 |
| Dlite® vanera Bed 54/54 W | D14.336.000 |
| Dlite® vanera Bed Eco 54/54 W | D14.334.000 |
| Dlite® vanera Bed Eco 54/54 W, NL | D14.484.000 |

Dlite® vanera Bed 39/39 W

| | |
|--|-------------|
| Dlite® vanera Bed 39/39 W, including DALI | D14.337.000 |
| Dlite® vanera Bed 39/39 W | D14.335.000 |
| Dlite® vanera Bed Eco 39/39 W | D14.333.000 |
| Dlite® vanera Bed Eco 39/39 W, NL | D14.483.000 |

Dlite® vanera Bath 2x24 W

| | |
|--------------------------------------|-------------|
| Dlite® vanera Bath 2x24 W | D14.620.000 |
| Dlite® vanera Bath Eco 2x24 W | D14.619.000 |

Dlite® vanera Toolbox spot

Use:

Dlite® vanera 2x54 C
 Dlite® vanera 2x54 C, DALI
 Dlite® vanera High-End 54/54 C

Unique:

Delivered fully assembled; lamps included

| | |
|-----------------------------------|--|
| Dlite® vanera Toolbox spot | D53.660.000 - White aluminum, RAL 9006 |
|-----------------------------------|--|

ORDER NUMBERS

| Dlite® vanera One | | Ceiling/Wall Design "Eco" (direct/indirect lighting) | | | |
|--|-----------|---|---------------------|---------------------|----------|
| | | with aluminum front panel | without front panel | aluminum side panel | EVG DALI |
| Dlite® vanera One Eco 1x24 | D15402000 | | X | | |
| Dlite® vanera One Bath Eco 1x24 | D15411000 | | X | | |
| Dlite® vanera One Eco 1x39 | D15404000 | | X | | |
| Dlite® vanera One Eco 1x54 | D15405000 | | X | | |

| Dlite® vanera One | | Ceiling/Wall Design "standard" (direct/indirect lighting) | | | |
|------------------------------------|-----------|--|---------------------|---------------------|----------|
| | | with aluminum front panel | without front panel | aluminum side panel | EVG DALI |
| Dlite® vanera One 1x24 | D15408000 | X | | X | |
| Dlite® vanera One Bath 1x24 | D15311000 | X | | X | |
| Dlite® vanera One 1x39 | D15310000 | X | | X | |
| Dlite® vanera One 1x39 | D15400000 | X | | X | X |
| Dlite® vanera One 1x54 | D15401000 | X | | X | |
| Dlite® vanera One 1x54 | D15409000 | X | | X | X |

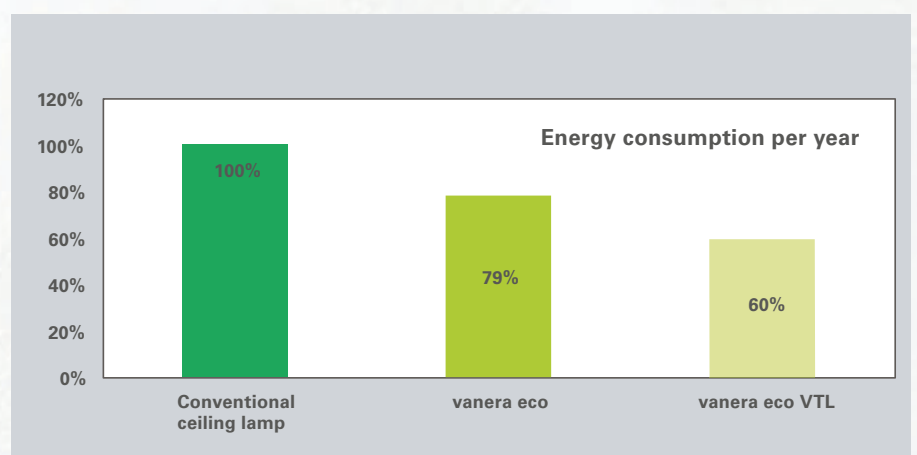
| Dlite® vanera Orbit | | Ceiling/Wall Design | |
|---|----------|----------------------------|-----------|
| Dlite® vanera Orbit 1x22 | Ø 395 mm | | D15343000 |
| Dlite® vanera Orbit 1x22 DALI | Ø 395 mm | | D15346000 |
| Dlite® vanera Orbit 1x55 | Ø 395 mm | | D15344000 |
| Dlite® vanera Orbit 1x55 DALI | Ø 395 mm | | D15347000 |
| Dlite® vanera Orbit 1x55/60 | Ø 595 mm | | D15345000 |
| Dlite® vanera Orbit 1x55/60 DALI | Ø 595 mm | | D15348000 |

| Customized Front Panels | | | |
|--------------------------------|----------------------|---------|---|
| Dlite® vanera panel | D41.311.000 - length | 600 mm | - Decor according to customer's request |
| Dlite® vanera panel | D41.312.000 - length | 900 mm | - Decor according to customer's request |
| Dlite® vanera panel | D41.313.000 - length | 1200 mm | - Decor according to customer's request |

USING LESS ENERGY DOESN'T HAVE TO MEAN HAVING LESS LIGHT.

Energy comparisons have shown that the vanera consumes at least **21% less** energy than a conventional ceiling light due to the high efficiency. With the Derungs light management, **another 19%** of energy can be saved. Additional savings are possible due to intelligent presence and daylight sensors. We would be pleased to create a customized lighting design for your situation.

Example: Only 8 vanera lamps instead of 15 conventional ceiling lamps are required in a standard hallway with a length of 22 m, in order to obtain the same lighting performance. At a continuous 8 hour operation of 365 days, this equals savings of approximately 150 euros or 730 kWh or 430 kg CO₂. Savings increase even more dramatically with the Derungs light management and the sensors.



Basic data: vanera eco C 2x54 W T5 and opal glass lamp 2x36 W TC-F, 1kWh = 0.21 euros/kWh

OWN DISTRIBUTORS

GERMANY

Herbert Waldmann GmbH & Co. KG
Postfach 5062
78057 Villingen-Schwenningen
Germany
Telephone +49 7720 601 100
Fax +49 7720 601 290
www.waldmann.com
info@waldmann.com

SWEDEN

Waldmann Ljusteknik AB
Skebokvarnsvägen 370
124 50 Bandhagen
Sweden
Telephone +46 8 990 350
Fax +46 8 991 609
www.waldmann.se
info-se@waldmann.com

SWITZERLAND

Waldmann Lichttechnik GmbH
Benkenstrasse 57
5024 Küttigen
Switzerland
Telephone +41 62 839 12 12
Fax +41 62 839 12 99
www.waldmann.com
info-ch@waldmann.com

USA

Waldmann Lighting Company
9, W. Century Drive
Wheeling, Illinois 60090
USA
Telephone +1 847 520 1060
Fax +1 847 520 1730
www.waldmannlighting.com
waldmann@waldmannlighting.com

AUSTRIA

Waldmann Lichttechnik Ges.m.b.H
Gewerbepark Wagram 7
4061 Pasching/Linz
Austria
Telephone +43 7229 67 400
Fax +43 7229 67 444
www.waldmann.com
info-at@waldmann.com

SINGAPORE

Waldmann Lighting Singapore Pte. Ltd.
Blk 168, Jalan Bukit Merah # 04-09 B
Connection 1, Tower 3
Singapore 150168
Singapore
Telephone +65 6275 8300
Fax +65 6275 8377
www.waldmann.com
sales-sg@waldmann.com

FRANCE

Waldmann Eclairage S.A.S
Z.I. - Rue de l'Embranchement
67116 Reichstett
France
Telephone +33 3 8820 95 88
Fax +33 3 8820 95 68
www.waldmann.com
info-fr@waldmann.com

CHINA

Waldmann Lighting (Shanghai) Co. Ltd.
Part A, No. Five Normative Workshop
199 Chang Jian Road, Baoshan
Shanghai, P.R.C. 200949
China
Telephone +86 21 5169 1799
Fax +86 21 3385 0032
www.waldmann.cn
s.lo@waldmann.com.cn

ITALY

Waldmann Illuminotecnica S.r.l.
Via della Pace, 18 A
20098 San Giuliano Milanese (MI)
Italy
Telephone +39 02 98 24 90 24
Fax +39 02 98 24 63 78
www.waldmann.com
info-it@waldmann.com

INDIA

Waldmann Lighting PVT. Ltd.
Plot No. 52
Udyog Vihar
Phase-VI, Sector-37
GURGAON-122011, Haryana
India
Telephone +91 124 412 1600
Fax +91 124 412 1611
www.waldmann.com
r.kumar@waldmann.com

NETHERLANDS

Waldmann BV
Lingewei 19
4004 LK Tiel
Netherlands
Telephone +31 344 631 019
Fax +31 344 627 856
www.waldmann.com
info-nl@waldmann.com

Derungs Licht AG

Hofmattstrasse 12
9200 Gossau
Switzerland
Telephone +41 71 388 11 66
Fax +41 71 388 11 77
www.derungslicht.com
mailbox@derungslicht.com

Further distribution partners you find at: www.derungslicht.com