



**SecurWATCH.**

**The new generation of  
disorientation systems.**

**SECURITY**

[www.schrack-seconet.com](http://www.schrack-seconet.com)

**SCHRACK**  
S E C O N E T

# SecurWATCH

” If a confused person has managed to leave the building, then a time-consuming search operation is unavoidable.”\*

\* **FALSE:**

By combining RFID and GPS technology it is also possible to ascertain their position precisely to within a few metres outside of buildings.

# Security assured by the newest technologies.



## The good feeling about the best quality of care.

The number of elderly people is constantly increasing – at the same time the challenges placed upon care facilities are also growing. New technologies are helping to ensure that patients, in spite of their afflictions are able to enjoy a generally unhindered and dignified life, whilst taking the burden off nursing staff and given their relatives a good feeling that the person being cared for is in the best possible hands.



## New technologies – greater options.

Schrack Seconet has been addressing the variety of challenges associated with care for disoriented people for many years. The experience that the company has gained in the area has been used in the development of the latest generation of SecurWATCH systems: Exact location determination, detection of the direction of movement, comprehensive protection of the patient's private sphere, individually defined safety levels, built-in intelligence and connection to VISOCALL

nurse call systems bring security and the quality of care to a whole new level.

## New: Exact location determination both indoors and outdoors.


Using a combination of RFID and GPS technologies, SecurWATCH is able to safely extend care to beyond the boundaries of the land on which the care facility stands: If a resident leaves the premises, then the GPS transmitter automatically switches on, staff members are informed – and do not need to search for long. The position of the missing person can be pinpointed to within 3 metres and displayed on smart phones and mobile systems among other systems. The time that can be saved as a result can prove to be lifesaving – e.g. in the event of an accident.

## New easy to use, failure-proof transponder.

The new high performance GPS transmitter modules can be built into the smallest possible space – in belts, in clothing or into ankle mounted tags. Within buildings the GPS module is turned off to save energy – so that the rechargeable cells last much longer.



**SecurWATCH**



” Monitoring systems for confused people only prevent people in care from going missing when left unattended.”\*

\* **FALSE:**

SecurWATCH can do much more – for example by contributing to protecting privacy or indirectly monitoring the resident's vital functions.

# Safeguarding privacy – granting quality of life.



## Ensuring the conflicts do not even arise.

People suffering from dementia are confused, go into the wrong resident's room, lie in the wrong bed, look for something, empty cupboards – conflicts cannot be avoided. SecurWATCH ensures that only people with the correct authorization can enter a room, thus protecting privacy and improving the social climate and making the work of the care staff considerably easier.



## Selective controlling off doors protects privacy.

Room doors can be assigned to the respective residents with SecurWATCH. A wireless key in the form of a wristwatch opens the door only for authorised people, for others it remains safely locked. Of course all the doors can also be opened using a physical key, and they always open from the inside.

## SecurWATCH detects whether everything is alright.

By linking information which in its own right does not say a great deal, SecurWATCH is now also able to monitor "vital functions": Data from different sources – e.g. water or energy consumption or room-specific settings for heating, ventilation and shutters can be combined and conclusions made about the resident and their well-being. If the captured values are above or below a definable threshold value, then an alarm is automatically triggered.

## Escort system: No alarm when accompanied.

Thanks to its integrated intelligence and automatically occurring routines, SecurWATCH makes everyday conditions in care facilities easier. For example, no alarm is triggered if the person being cared for leaves the area they are assigned to, if they are being accompanied by a doctor or carer.



# SecurWATCH



” The same rules apply for all residents in a care facility.”\*

\* FALSE:

SecurWATCH can improve the quality of life of persons suffering from dementia considerably, as freedom of movement can be individually defined for every individual and constantly adapted as required.

# A system that instils confidence.



## Placing care facilities in the best light.

If people being cared for don't "go missing" and feel happy in their new home, then this reflects well on the care institution – and contributes positively to their evaluation of the institution. Improved quality of care, advantages in terms of liability and responsibility, and – last but not least – costs are additional arguments in favour of the SecurWATCH disorientation system.

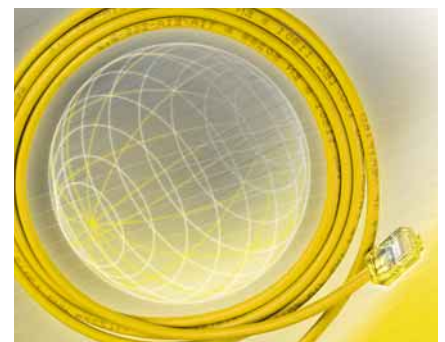


## Knowhow thanks to many years of experience.

Schrack Seconet has been in direct contact with care homes and homes for the elderly for many years. The experience that has been gained from countless personal conversations, is permanently relayed to the product development department.

## SecurWATCH: Proven quality, new opportunities.

- Modular structure, can be extended
- Exact location determination both indoors and outdoors
- Tracking of direction of movement
- Move freedom of movement for residents
- Reporting to fixed or mobile systems
- Comprehensive and exact documentation options
- Inexpensive solution for receiver units
- Discreet transponders – also available as a wristwatch
- Optional: Monitoring of vital functions by data links
- Optional: Movement sensors for epileptics
- Can be integrated: Interface to VISOCALL nurse call systems





## SCHRACK SECONET AG

Headquarter Austria: A-1120 Vienna, Eibesbrunnergasse 18 • Tel.: +43-1-81157-0 • office@schrack-seconet.com • www.schrack-seconet.com

### Branch offices Austria:

A-6850 Dornbirn, Sebastianstraße 13a • Tel.: +43-5572-51199-0  
A-8055 Graz, Neuseiersberger Straße 157 • Tel.: +43-316-407676-0  
A-6020 Innsbruck, Dr.-Franz-Werner-Straße 36 • Tel.: +43-512-365366-0  
A-9020 Klagenfurt, Feldkirchner Straße 138 • Tel.: +43-463-429362-0  
A-4060 Leonding-Hart, Kornstraße 16 • Tel.: +43-732-677900-0  
A-5020 Salzburg, Vogelweiderstraße 44a • Tel.: +43-662-887122-0

Czech Rep. • CZ-100 00 Prague 10, V Úžlabině 1490/70 • Tel.: +420-2-74782284  
Hungary • HU-1119 Budapest, Fehérvári út 89-95 • Tel.: +36-1-4644300  
India • IN-122002 Gurgaon, Technopolis, DLF Golf Course Road, Sector-54 • Tel.: +91-124-4626248  
Poland • PL-02-672 Warsaw, Ul. Domaniewska 44a, bud. Platinum V • Tel.: +48-22-33 00 620  
Romania • RO-021723 Bucharest, Sos.Iancului nr. 6A, Sector 2 • Tel.: +40-372 756 316  
Russia • RU-129626 Moscow, Ul. Staroalexejevskaja 5 • Tel.: +7-495-510 50 15  
Slovakia • SK-83527 Bratislava–Rača, Mudrochova 2 • Tel.: +421-2-44635595  
Sweden • SE-145 84 Norsborg, Botvid Business Center • Tel.: +46-8-680 18 60  
Turkey • TR-34722 Kadıköy–İstanbul, Kasap İsmail Sk. 5/12 • Tel.: +90-216-345 51 99

Sales partners in:

**SECURITY**

www.schrack-seconet.com

**SCHRACK**  
S E C O N E T